



## AUSTROADS

# Guide to Traffic Engineering Practice Part 7 - Traffic Signals

## ERRATA LIST

Prepared by R. Akçelik  
Akcelik & Associates

11 February 2006

**Section:** Technical Contributors list

**Error:** "Infrastrtructure" should be "Infrastructure".

**Section:** Section 1.1

**Error:** The design, installation, operation and maintenance details given in this guide need to be ... (replace "needs" by "need").

**Section:** Table 1.1 (iii)

**Error:** Replace "6, App B, C" by "6, App C" (delete B).

**Section:** Section 12.6, last sentence of 3rd para.

**Error:** Delete "A typical example is illustrated in Appendix C.". A cable connection chart is not included in the Guide.

**Section:** Section B.2.2, para. 2

**Error:** Glauz and Harwood (1999) give maximum acceleration rates in the range 1.7 to 2.8 m/s<sup>2</sup> for cars and 0.2 to 0.9 m/s<sup>2</sup> for trucks, and state ... (replace "states" by "state").

**Section:** Equation B.3.19

**Error:** Should be set as follows:

$$L_p = 1.9 e^{0.33 L_{sj}}$$

**Section:** Section D.5.3.3, Clearance 2 under Pedestrian Settings

**Error:** Add ")" at the end.

**Section:** Section D.5.3.3, 2nd para. under Other Time Settings

**Error:** This should read "... is the C-A1 detector (11 m long)", i.e. delete the first "11".

**Section:** Section D.3.1 (d)

**Error:** Replace "Intersection widths used for all-red time calculations are 13 m for North-South movements and 25 m for East-West movements, ..." by "Clearance distances used for all-red time calculations are 15 m for North-South movements and 30 m for East-West movements, ..."

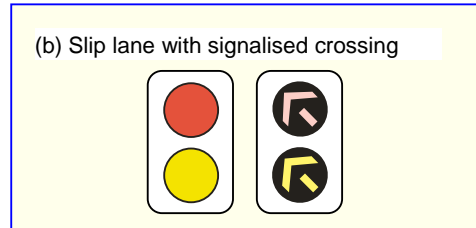
**Section:** Section D.5.1 (a) Signal faces

**Note:** Five-aspect signal face cannot achieve the late start feature in Phase A (red arrow needed).

## FIGURES

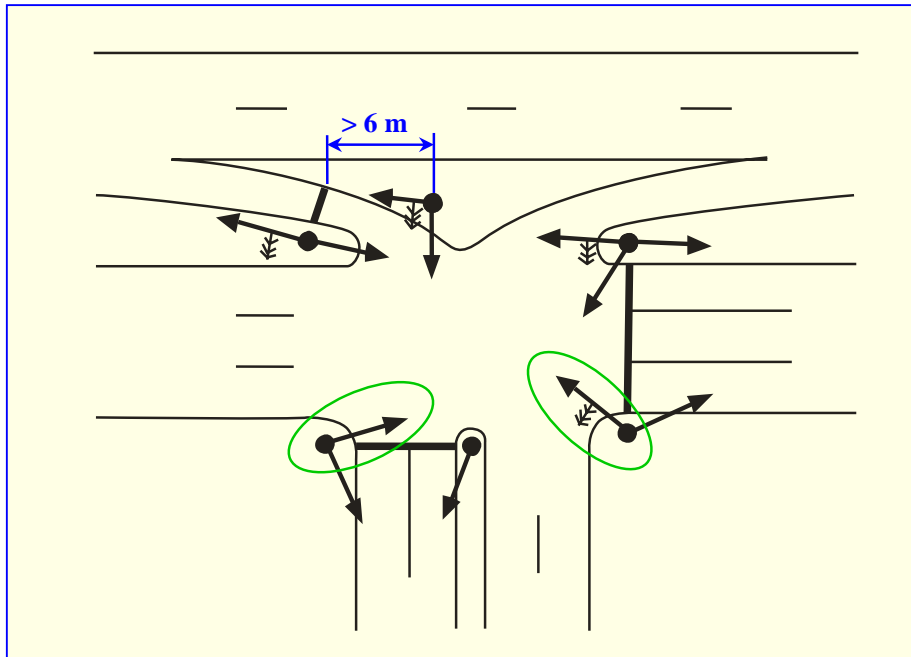
**Figure:** 5.6 (b)

**Error:** Second signal face should show red arrow rather than red circle.



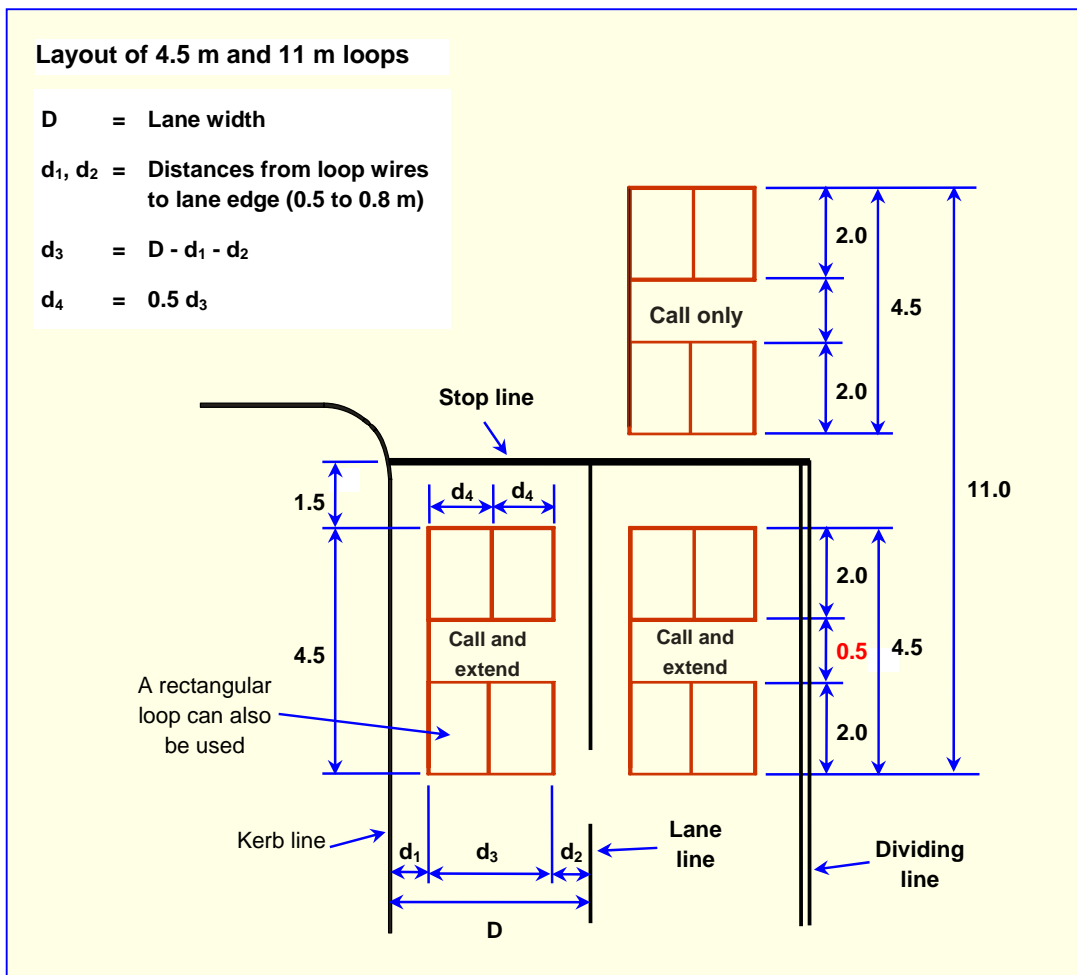
**Figure:** 7.7

**Note:** A Tertiary signal face added for East approach, and a Secondary signal face added for West approach (right turn).



**Figure:** 8.3 (a)

**Error:** Gap between the two sections of the loop in the right-hand lane should be 0.5 m (not 2.0 m).

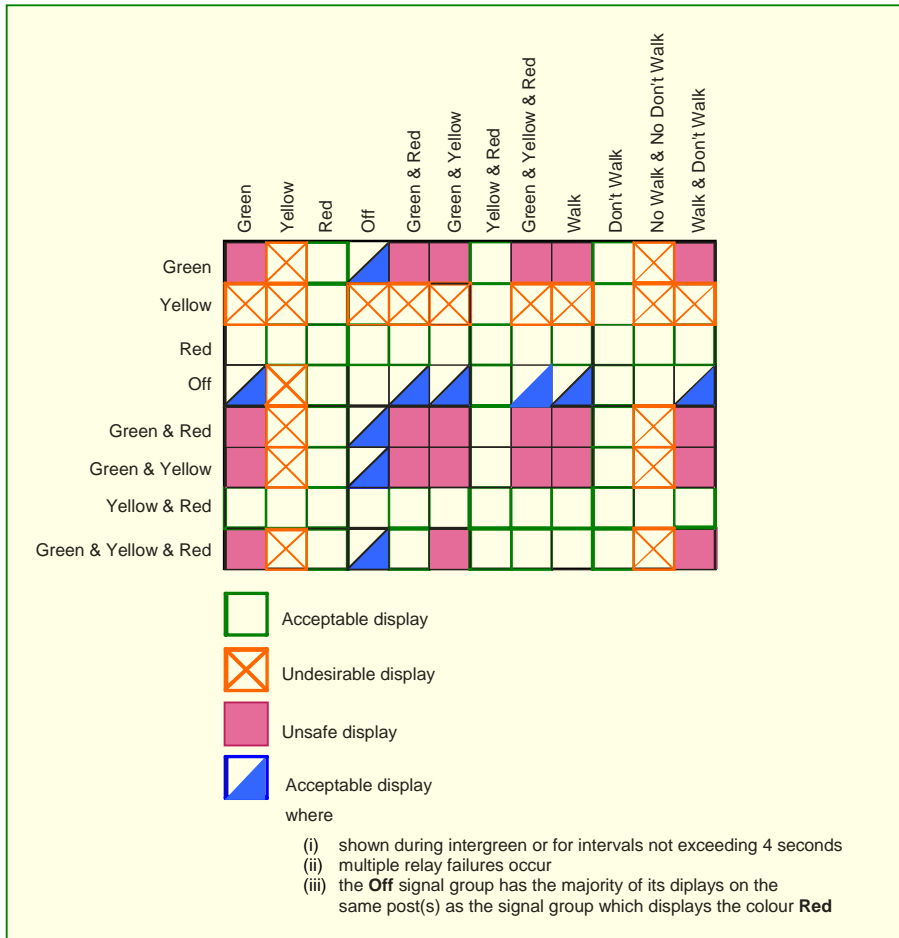


**Figure:** 13.1

**Note:** Green blocks in the signal timing diagrams indicate red signals.

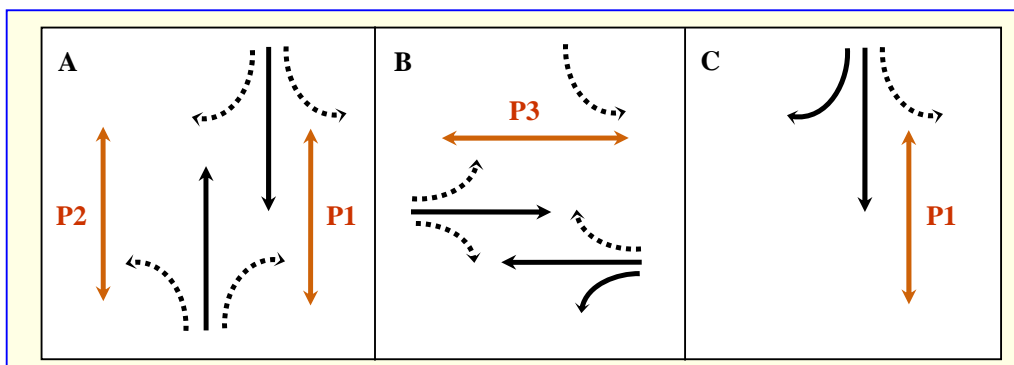
**Figure:** 9.2

**Error:** Acceptable display and undesirable display symbols are wrong. Correct figure is given below.



**Figure:** D.7

**Note:** Left turn movement in Phase C should be shown as a broken line due to pedestrian conflict.



**Figure:** D.16

**Error:** Phase C value for HEADWAY 2 should be 0.7 s.  
Phase C value for WASTE 2 should be 4.0 s.